

EASTER BREAD

LUZI

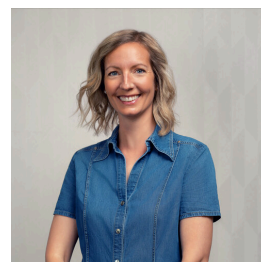
Release date: Jan 2025

For: Unisex

PERFUMER

Created by Daniela Marty

700240-A



INGREDIENTS



Top Notes
toffee, caramel, butter

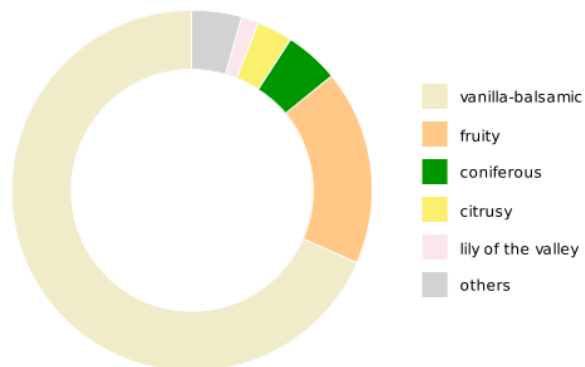


Heart Notes
dairy notes, heliotrope, coconut



Base Notes
vanilla, tonka bean, sweet notes

SCENT PROFILE



IFRA CONFORMITY

51st amendment to the IFRA
Code of practice

Applications	Max. use level
Cat. 1	not permitted
Cat. 2	0.57 %
Cat. 3	3.42 %
Cat. 4	10.20 %
Cat. 5.A	2.61 %
Cat. 5.B	2.61 %
Cat. 5.C	2.61 %
Cat. 5.D	0.85 %
Cat. 6	not permitted
Cat. 7.A	6.92 %
Cat. 7.B	6.92 %
Cat. 8	0.85 %
Cat. 9	20.00 %
Cat. 10.A	20.00 %
Cat. 10.B	61.53 %
Cat. 11.A	0.85 %
Cat. 11.B	0.85 %
Cat. 12	100.00 %

INGREDIENTS

Ingredients of Regulatory Interest	Not added	Added
Atranol & Chloroatranol	×	
CMR 1	×	
CMR 2 official		×
CMR 2 self-classified	×	
Fragrance Allergens according to Regulation (EC) No 1223/2009 on cosmetic products and its amendments		×
Halogenorganic compounds	×	
Lilial	×	
Lyral	×	
Nitromusks	×	
Phototoxic compounds (if added, see IFRA Conformity for save use level)	×	
Phthalates		×
Polycyclic musks	×	
SVHC (Substances of Very High Concern)	×	
Substances of animal origin	×	

Last updated 15.01.2025

The information of this declaration reflects our knowledge and understanding available at the date specified. Values below 0.001% are not taken into account.